

百煉千鎚 塑造完美

Exceptional Competence, Unexceptionable Solutions

經歷多年來的努力，百塑已在全球市場建立了崇高的聲譽與品牌信賴度。無論於機器性能、品質或價位等方面，我們都能徹底滿足客戶的要求，並且深獲客戶的信賴。其重要因素除了包括百塑對最佳品質的堅持外，尚有對生產管理的不斷改善與生產技術的提升。

Through years of efforts, Multiplas has established an excellent reputation in the worldwide plastic industries for the dependability of their products and services.

Multiplas values full-customer-satisfaction through their innovative design, performance, quality assurance, services and price competitiveness.

This reputation is not only resulted from their persistence on the best quality, but also from their constant improvement of production management and upgrading of manufacturing technologies.

座落於桃園市華亞科學園區的企業總部
Headquarters and Factory in Taoyuan, Taiwan



嵌入與特殊注塑成型技術與設備的最佳代言人

Insert and Technical Moulding Solutions Provider

創立於1988年的百塑企業股份有限公司，專業射出成型機之研發與製造廠。在公司理念「誠信、踏實、負責」的指引下，經歷多年來的努力，百塑企業已成為全球的知名品牌。

百塑企業以最務實經營理念在穩定中逐步追求企業不斷的成長茁壯。為了因應公司的成長需求，百塑企業於2001年正式啟用現代化廠房，採用現代化生產管理，大幅提昇百塑的全球競爭力。

不斷致力研究創新，提昇技術實力是百塑機械居於領先地位的重要因素之一。百塑全體員工更將努力不懈，逐漸邁向亞洲第一，進而世界第一的立式射出成型機專業廠。

Established in 1988, Multiplas Enginery Co., Ltd. specializes in the design and manufacture of injection molding machines. Under the company's policy of "Trustworthy ; Dependable ; Responsible " and years of efforts, Multiplas has become an internationally renowned brand name.

Based on the concept of practicality, Multiplas has devoted itself to pursuing the company's growth at a steady pace. To meet the gradual growth of the company, Multiplas' new modernized facility began operations in 2001. This new facility, combined with modern production management, has effectively upgraded Multiplas' competitive capabilities in the worldwide market place.

Constant innovation in upgrading technological levels is one of the reasons for the leading position of Multiplas machines. Looking to future, all at Multiplas will strive harder toward the target of being 'No. 1' in Asia and moving further to being a world-class, professional injection molding machine manufacturer.

核心競爭力 CORE COMPETENCE



座落於昆山的百塑中國工廠
China Factory in Kunshan

MULTIPLAS

TECHNICAL MOULDING SOLUTIONS PROVIDER

先進製造能力

Advanced Manufacturing Capabilities

全系列精密加工設備，徹底掌控零件品質

自創立以來，百塑一貫堅持重要零件組件完全自製的策略，以確實掌控零件組件的品質。多年來，百塑不斷斥資引進日本高精密CNC車床，及台灣知名品牌CNC工具機作精密零件之生產。全系列精密加工設備，為百塑機器品質提供穩固的根基。

百塑擁有現代化的廠房，規劃完善的生產線，以模組化組裝機器，現場生產人員以最嚴謹的態度，極力呵護每一個生產細節。透過這種現代化的生產管理制度，可確保百塑機器的頂尖性能與可靠度。

A Wide Range of Precision Machining Equipment Allows Thorough Control of Parts Quality

Since established, Multiplas has insisted that all critical parts are machined in-house to fully control their quality. Over the years, Multiplas has invested heavily in sophisticated Japanese CNC lathes and renowned Taiwanese CNC machine tools for parts machining. The wide range of sophisticated machine tools provides a solid foundation for the quality of Multiplas machines.

Multiplas machines are manufactured in modern facilities with well-planned production lines for the modular assembly of machines. Our manufacturing technicians always pay special attention to every detail throughout each step during the manufacturing process. All these, combined with a modern production management system, assure the top performance and the maximum dependability of every machine from Multiplas.



完善的教育訓練

Comprehensive Educational Training

不斷提升整體人員素質

百塑內部有定訂完善的教育訓練計劃，涵蓋機器設計、生產技術、生產管理、品質管控等，以致提升各部門人員的能力。除了不斷強化百塑的企業體質外，還可以隨時掌握世界先進技術的資訊，作為百塑努力的目標。

For Constantly Improving Employees' Knowledge

At Multiplas, a series of comprehensive internal educational programs is held, including machine design, manufacturing technologies, production management and quality control, etc. The objective is to enhance personnel capabilities in every department. Furthermore, with these educational training programs, Multiplas' enterprise structure is reinforced and the world's latest technological information is available to employees. Multiplas always keeps on moving toward more advanced technologies.



專業研發團隊

R&D Team Expertise

軟體、硬體自行開發設計

百塑技術研發部擁有由多位資深研發工程師組成之團隊，不論實務或理論，都具有深厚的基礎。除了機器硬體的設計外，在控制系統的軟體規劃設計方面，亦不斷朝向更先進、更人性化的目標開發，以提升機器特性。多年來，我們對技術研發投入了無數的資金與心血，並且獲得顯著的研發成果，其中多項已榮獲專利。

Software and Hardware Developed In-house

The Multiplas research and development department consists of several highly experienced engineers who have outstanding practical experience and theoretical backgrounds. In addition to machinery hardware design, our R&D engineers also conduct planning and design for control software to provide more advanced and more humanized control performance. These enable Multiplas machinery to achieve higher operational performance than ever. Over the years, Multiplas has invested a lot of capital and efforts in technological research and development. As a result, Multiplas has enjoyed outstanding R&D achievements, many of which have been patented.



卓越研發成果

- 1990年2月 研發設計自動製程設備，組合直立式射出成型機一貫作業系統
- 1993年9月 榮獲精良機械「金龍獎」
- 1998年 研發生產臥式射出成型機
- 1999年 成功開發立式雙色雙料複合式射出成型機，並取得專利權
- 2000年3月 成功開發全電式射出成型機
- 2001年9月 通過經濟部工業局自動化工程服務機構登錄合格
- 2001年10月 成功開發雙色雙料複合式射出成型機裝置系統
- 2003年7月 成功開發三色三料立式射出成型機裝置系統
- 2004年6月 成功開發三色三料臥式射出成型機裝置系統
- 2006年1月 成功開發高速(≥1500mm/s)高壓射出成型機



Outstanding R&D Achievements

- Feb 1990 Successfully developed fully automatic processing equipment to combine with vertical injection molding machines for an integrated operational system.
- Sep 1993 Awarded the "Golden Dragon" prize.
- 1998 Successfully developed and produced horizontal injection molding machine.
- 1999 Successfully developed vertical 2-color / 2-material complex injection molding machine (patented).
- Mar 2000 Successfully developed fully electric injection molding machine.
- Sep 2001 Registration for "Automated Engineering Service Company" was approved by the Industrial Bureau Economical Affairs Department.
- Oct 2001 Successfully developed horizontal 2-color / 2-material complex injection molding machine.
- July 2003 Successfully developed vertical 3-color/3-material injection molding machine.
- Jane 2004 Successfully developed horizontal 3-color/3-material injection molding machine.
- Jan 2006 Successfully developed high speed (≥1500mm/s) high pressure injection molding machine.



嚴格品質把關

Rigorous Quality Control

百塑機器就是品質的保證

百塑為了徹底落實既定的品質政策，特別成立全面品質系統。在機器製造過程中，都定有詳細的品質標準，作為品質檢驗的依據。無論是進料檢驗、製程檢驗或最後機器成品檢驗與測試等，務必完全達到最高標準。目前百塑已通過ISO 9002國際認證。機器也通過CE認證，這是對百塑企業在追求品質的具體肯定。

Guaranteed Quality

To fully implement the company's quality assurance policy, Multiplas has set up a total quality control system. Each step during the manufacturing process has quality standards to follow. From incoming inspection, in-process inspection to final product inspection and testing, quality at each stage must reach the highest standards. Nowadays, Multiplas has been certified by ISO 9002 and their machines also certified by CE. These provide an approval for Multiplas' dedication to the pursuance of quality.

國際認證

1997年1月 ISO 9002國際認證

1997年5月 通過歐洲機械安全CE認證

2005年5月 ISO 9002-2001國際認證

International Certifications

Jan 1997 ISO 9002 certified

May 1997 CE certified

May 2005 ISO 9000-2001 certified



產品導覽 Product Guide

泛用型 General Purpose	立式 Vertical	滑板式 Tables	上射式 Vertical Inj.	專業型 Special Application	矽膠射出 LSR (LIM) molding
		無柱式 Tie-barless	側射式 Horizontal Inj.		
	轉盤式 Rotary	側射式 Horizontal Inj.	BMC射出 BMC molding		
	立式雙色機 2-Color(material) vertical	上射式 Vertical Inj.			
臥式 Horizontal	單色 Standard-type (direct hydraulic)	側射式 Horizontal Inj.	系統服務機型 Automation System		
	雙色(料)CSM 2-Color(material) horizontal				

直立機射出/鎖模結構圖示 Injection/Clamping Configuration of Vertical Injection Molding Machine

下模與載方式 Type of Mold Carrier	輸出/合模方式 Type of Injection / Clamping	固定下模 Fixed Bottom Platen	單模滑板 Slide Table (S)	雙模滑板 Double Shuttle Tables (SD)	轉盤 Rotary Table (R)	C型無機柱 Tie-barless C-frame Design (C)
直立合模 Vertical Clamping	V2 V4 VC VH		V2 - S V4 - S VH - S	V2 - SD V4 - SD VC - SD VH - SD	V - R VC - R VH - R	—
直立射出 Vertical Injection	V2 V4		V2 - S V4 - S	V2 - SD V4 - SD	V3 - R V4 - R	VCU 15 - 55 tons 0.5 - 5 oz.
橫式射出 Horizontal Injection	VC VH		VH - S	VC - SD VH - SD	VC - R VH - R	VC 15 - 85 tons 0.5 - 8 oz.

百塑射出成型機之特色說明及成型應用

Features and Applications of Multiplas Injection Molding Machine

泛用型 - 直立式

1. 為上下開模、埋件成型較容易，且安全不易造成模具壓傷。
2. 可多模選用，進而提高生產速度及容易控制品質，增加生產效率。
3. 機體結構微垂直裝，拆裝十分容易且管路為開放式，保養及維修輕鬆簡易。
4. 立式為上下開模，四面作業空間較大，配合自動拉帶裝置皆可達全自動嵌入成型之目的。
5. 立式機安置空間較小，可移動機身，生產線上隨線作業。
6. 可多色成型，省時、省力。

General Purpose - Vertical Type

1. Up / down clamping allows easy insertion and enhances safety. Also the tooling would not be damaged easily.
2. Multi-mold option can be selected to improve productivity, quality control and efficiency.
3. The vertical structure of the machine and its flexible arrangement of wires and pipes allow easy assembly, disassembly and maintenance.
4. Up / down clamping allows wider operation area on four sides of the machine. Lead frame device can be equipped to make insert molding process automatic.
5. Less floor space required, more mobility, and on line or off line process easily.
6. 2/3-color process saves time and improves efficiency.



V4-2R-120T



SM-200T-E

泛用型 - 臥式

1. 多段SSR固態電器電熱控制繼電器PID溫度控制。
2. 獨特的恆溫射嘴。
3. 高剛性FCD-45最佳化設計模板。
4. 高效率、活動板低變形(≤0.02mm)直壓式鎖模結構。
5. 多種轉模仁轉芯功能(可供CSM雙/三色機選購)。
6. 鎖模力自動檢出、顯示功能。
7. 精準確定的低壓合模控制油路設計。

General Purpose - Horizontal Type

1. SSR thermo control and PID temperature control.
2. Nozzle with constant temperature control.
3. High rigid platen made by FCD-45.
4. High efficiency, low deformation (≤0.02mm) direct hydraulic clamping system.
5. Rotation table and rotation core functions (option for 2/3-color machines).
6. Self diagnostic and display functions for clamping force.
7. Precision hydraulic system achieves accurate and low pressure clamping control.

VC Series

無機柱系列

'Tie-barless Clamp' Vertical Series

鎖模力 : 35 - 200 ton

Clamping Force

射出重量 : 1 - 20 oz

Injection Capacity

特性 : 直立合模，橫式射出。

Main Features : Vertical clamping, horizontal injection.

無機柱阻隔，便於嵌入及取出。

Tie-barless C-frame design facilitates insertion and take-out process.



VC
固定下模 Fixed Bottom Platen



VC-SD
雙模滑板 Double Shuttle Tables



VC-R
轉盤 Rotary Table

規格 Specifications

型號 MODEL	單位 UNIT	VC			VC-SD 35T			VC-R			VC			VC-SD 50T			VC-R			VC			VC-SD 55T			VC-R		
		Ø22	Ø25	Ø30	Ø22	Ø25	Ø30	Ø22	Ø25	Ø30	Ø26	Ø30	Ø35	Ø26	Ø30	Ø35	Ø26	Ø30	Ø35	Ø32	Ø35	Ø40	Ø32	Ø35	Ø40	Ø32	Ø35	Ø40
螺桿直徑 Screw diameter	mm	Ø22	Ø25	Ø30	Ø22	Ø25	Ø30	Ø22	Ø25	Ø30	Ø26	Ø30	Ø35	Ø26	Ø30	Ø35	Ø26	Ø30	Ø35	Ø32	Ø35	Ø40	Ø32	Ø35	Ø40	Ø32	Ø35	Ø40
理論射出容量 Theoretical injection volume	cm ³	53	69	99	53	69	99	53	69	99	86	99	135	86	99	135	86	99	135	129	154	201	129	154	201	129	154	201
射出重量 Injection capacity(PS)	g	50	65	93	50	65	93	50	65	93	81	93	127	81	93	127	81	93	127	121	145	189	121	145	189	121	145	189
射出壓力 Injection pressure	kg/cm ²	2835	2195	1524	2835	2195	1524	2835	2195	1524	2500	2178	1600	2500	2178	1600	2500	2178	1600	2933	2451	1877	2933	2451	1877	2933	2451	1877
射出速率 Injection rate	cm ³ /s	29	37	53	31	40	58	31	40	58	44	50	68	56	65	88	56	65	88	59	71	92	59	71	92	58	71	92
可塑化能力 Plasticizing capacity(PS)	kg/h	10	14	23	11	16	24	11	16	24	21	24	35	27	31	45	27	31	45	41	49	67	41	49	67	41	49	67
螺桿轉速 Screw rotation speed	rpm	174			188			188			187			240			240			247			247			247		
電熱容量 Heating capacity	kW	4			4			4			5.5			5.5			5.5			7.5			7.5			7.5		
鎖模力 Clamping force	ton	35			35			35			55			55			55			85			85			85		
最小模厚 Minimum mold height	mm	175			175			175			175			175			175			195			195			195		
開模行程 Opening stroke	mm	200			200			200			200			200			200			250			250			250		
最大開距 Maximum daylight	mm	375			375			375			375			375			375			445			445			445		
成品頂出距離 Ejector stroke	mm	90			100			100			90			100			100			90			100			100		
頂出力 Ejector force	ton	2.3			2.3			2.3			2.3			2.3			2.3			2.3			2.3			2.3		
電動馬達 Electric power	hp(kW)	7.5/5.6			10/7.5			10/7.5			10/7.5			15/11.2			15/11.2			15/11.2			20/14.9			20/14.9		
油箱容量 Oil tank capacity	l	140			160			160			140			190			210			275			275			285		
冷卻水容量 Cooling water capacity	l/h	1200			1600			1600			1500			2300			2300			2400			2700			2700		
滑板行程 Slide table stroke	mm	-			480			-			-			520			-			-			560			-		
轉盤直徑 Rotary table diameter	mm	-			-			730			-			-			850			-			-			980		
機架尺寸 Machine dimensions(LxWxH)	m	2.6x1.0x1.95			2.7x1.9x2.0			2.9x1.1x2.1			2.7x1.05x1.95			2.9x2.0x2.0			3.0x1.2x2.1			3.1x1.4x2.2			3.45x2.25x2.25			3.6x1.4x2.2		
機架重量 Machine weight	ton	2.3			-			-			2.9			3.3			-			4.9			-			-		

為配合設計之改進與更新，以上規格如有更改，恕不另行通知。
Due to continuous development of our products, specifications are subject to change without prior notice.

本公司亦接受特殊規格之訂製，歡迎垂詢。
Machine can be custom made upon request. Please call for further details.

通用型 General Purpose
直立式 Vertical Type

VH Series

側射立式系列

'Horizontal Injection' Vertical Series

- 鎖模力 : 35 - 3200 ton
Clamping Force
射出重量 : 1 - 500 oz
Injection Capacity
特性 : 直立合模，橫式射出。
Main Features : Vertical clamping, horizontal injection.

寬框間距，結構強固，鎖模力可達3200 ton。
Wider distance between tie bars. Strong structure to resist deformation. Clamping force up to 3200 ton.

射座高度可調整，讓模具設計更具靈活性。
The position of injection unit is freely adjustable. Makes the tooling design more easier.

- 選購特殊功能 : 多樣化油路系統設計（半閉、伺服或高速注塑）可配合客戶需求。
Optional Feature : Diversified hydraulic system (Semi-closed Loop, Injection Closed Loop or High Speed Injection with Accumulator) is designed to meet different application needs.



VH
固定下模 Fixed Bottom Platen



VH-S
單模滑板 Slide Table



VH-SD
雙模滑板 Double Shuttle Tables



VH-R
轉盤 Rotary Table

規格 Specifications

型號 MODEL	單位 UNIT	35T				65T				125T				160T				200T				250T			
		VH	VH-S	VH-SD	VH-R	VH	VH-S	VH-SD	VH-R	VH	VH-S	VH-SD	VH-R	VH	VH-S	VH-SD	VH-R	VH	VH-S	VH-SD	VH-R	VH	VH-S	VH-SD	VH-R
螺桿直徑 Screw diameter	mm	Ø 22	Ø 25	Ø 30	Ø 28	Ø 32	Ø 35	Ø 35	Ø 40	Ø 45	Ø 40	Ø 45	Ø 50	Ø 45	Ø 50	Ø 55	Ø 50	Ø 55	Ø 55	Ø 60	Ø 50	Ø 55	Ø 55	Ø 60	
理論射出量 Theoretical injection volume	cm ³	53	69	99	86	113	135	154	201	254	232	294	363	382	471	570	471	570	570	679	471	570	570	679	
射出重量 Injection capacity(PS)	g	50	65	93	81	106	127	145	189	239	219	277	341	359	443	536	443	536	536	638	443	536	536	638	
射出壓力 Injection pressure	kg/cm ²	2835	2195	1524	2500	1914	1600	2451	1877	1483	2520	1991	1613	2434	1971	1629	1971	1629	1629	1369	1971	1629	1629	1369	
射出速率 Injection rate	cm ³ /s	31	40	57	44	57	68	82	108	136	99	126	155	128	153	185	200	242	289	289	200	242	242	289	
可塑化能力 Plasticizing capacity(PS)	kg/h	11	15	24	21	29	35	61	84	101	82	100	125	87	109	127	84	98	117	117	84	98	98	117	
螺桿轉速 Screw rotation speed	rpm	186	186	188	188	187	187	240	240	289	289	247	247	268	268	268	220	160	160	160	160	160	160	160	
電熱容量 Heating capacity	KW	4	4	4	4	5.5	5.5	5.5	5.5	7.5	7.5	7.5	7.5	9.6	9.6	9.6	12.5	12.5	12.5	9.6	14.6	14.6	14.6	9.6	
鎖模力 Clamping force	ton	35	35	35	35	65	65	65	65	110	110	110	110	160	160	160	200	200	200	250	250	250	250	250	
最小模厚 Minimum mold height	mm	180	180	180	180	200	200	200	200	200	250	250	250	300	300	300	300	300	300	300	300	300	300	300	
開模行程 Opening stroke	mm	250	250	250	250	250	300	300	350	350	400	400	400	400	400	400	400	400	400	400	400	400	400	400	
最大開距 Maximum daylight	mm	430	430	430	430	450	450	500	500	550	550	550	550	650	650	650	700	700	700	700	700	700	700	700	
成品頂出距離 Ejector stroke	mm	90	90	100	100	90	90	100	100	100	100	100	100	125	125	125	125	125	125	125	150	150	150	150	
頂出力 Ejector force	ton	2.3	2.3	2.3	2.3	2.3	2.3	2.3	2.3	5.4	5.4	5.4	5.4	5.4	5.4	5.4	5.4	5.4	5.4	5.4	5.4	5.4	5.4	5.4	
電動馬達 Electric power	hp(kW)	7.5/5.6	7.5/5.6	10/7.5	10/7.5	10/7.5	10/7.5	15/11.2	15/11.2	20/14.9	20/14.9	20/14.9	20/14.9	25/18.7	25/18.7	30/22.4	30/22.4	30/22.4	30/22.4	40/29.8	40/29.8	40/29.8	40/29.8	50/37.3	50/37.3
油箱容量 Oil tank capacity	l	150	150	150	150	170	170	210	210	290	290	290	290	340	340	340	340	340	340	480	480	480	480	540	540
冷卻水容量 Cooling water capacity	lhr	1200	1200	1500	1500	1500	1500	2300	2300	2800	2800	3100	3100	3400	3400	4000	4000	4300	4300	5600	5600	5600	6200	6200	
滑板行程 Side table stroke	mm	-	360	480	-	-	300	580	-	-	250	680	-	-	300	450	-	-	350	870	-	-	450	1000	
轉盤直徑 Rotary table diameter	mm	-	-	-	680	-	-	-	780	-	-	-	980	-	-	-	1160	-	-	-	1370	-	-	1590	
機框尺寸 Machine dimensions(LxWxD)	m	2.8x1.35x2.05	2.85x1.55x2.15	2.9x1.55x2.2	2.8x1.5x2.1	3.1x1.7x2.35	2.9x1.8x2.4	3.1x1.8x2.5	3.1x1.8x2.5	3.45x1.8x2.8	3.3x1.65x2.9	3.4x2.15x2.9	3.5x1.9x2.85	3.7x1.85x3.05	3.7x1.7x3.23	3.6x2.45x3.2	4.2x2.1x3.15	4.0x1.9x3.3	4.15x1.9x3.4	4.25x3.15x3.4	4.3x2.4x3.25	4.1x1.9x3.6	4.25x1.9x3.7	4.35x3.2x3.5	4.4x2.5x3.55
機框重量 Machine weight	ton	-	-	-	-	-	-	-	-	-	-	-	-	-	-	-	-	-	-	-	-	-	-	-	

為配合設計的改進及更新，以上規格如有更改，恕不另行通知。
Due to continuous development of our products, specifications are subject to change without prior notice.

本公司亦接受特殊規格之訂製，歡迎垂詢。
Machine can be custom made upon request. Please call for further details.

SM Series

直壓臥式系列

'Direct Hydraulic Clamp' Horizontal Series

直壓合模系統 DIRECT HYDRAULIC CLAMPING UNIT

獨立液壓及射出的液壓迴路
Independent hydraulic circuits for clamping and injection

寬柱間距及長頂出行程，適用於特殊模具
Wider distance between tie bars and longer ejector stroke add flexibility to tooling design

直壓合模機構，機械磨損率低
Direct hydraulic clamping unit is designed to withstand mechanical wearing

高速度合模，快速充油裝置，縮短成型週期
High speed mold closing driven by jack cylinders to reduce cycle time

可選購採用全閉環迴路的高速射出裝置
Optional high-speed injection unit utilizing closed-loop system.



SM-200T

塑化射出系統 PLASTICIZING INJECTION UNIT

多種螺桿尺寸供不同需求使用
Various screw sizes are available to meet different processing needs

適當螺桿長徑及螺距比例以達到最佳塑化效果
Optimum screw L/D ratio attains excellent plasticizing effect

全閉環 / ACC 高速射出 (300 mm - 1000 mm)
Closed loop / ACC high injection speed (300 mm - 1000 mm)



動模形變極低的直壓鎖模結構，材質為高韌性之球墨鑄件
Zero deformation on moving platen driven by a direct hydraulic clamp cylinder. Made of superior performance casting steel

電控系統 CONTROL UNIT

穩定、多功能、模組化可程式控制系統，維修簡便
Equipped with stable, functional and modular Programmable Logic Controller (PLC). Ease of maintenance

程式軟體提供快速成型條件設定
User-friendly software enables quick and easy molding setup

規格 Specifications

型號 MODEL		單位 UNIT		SM-10T	SM-20T	SM-30T	SM-40T	SM-50T	SM-60T	SM-80T	SM-100T	SM-150T	SM-200T	SM-250T	SM-300T	SM-400T	SM-500T					
TYPE				A		B		C		D		E		F		G		H		I		
射壓系統 INJECTION UNIT	螺桿直徑 Screw diameter	mm	ø 16 ø 18 ø 20	ø 18 ø 22 ø 25	ø 22 ø 25 ø 20	ø 25 ø 30 ø 35	ø 30 ø 35 ø 40	ø 35 ø 40 ø 45	ø 40 ø 45 ø 50	ø 50 ø 55 ø 60	ø 55 ø 60 ø 65	ø 60 ø 65 ø 70	ø 70 ø 75 ø 80									
	理論射出容量 Theoretical injection volume	cm ³	16 20 25	25.5 38 49	45 58 25	68 96 134	113 154 201	173 226 286	276 350 432	540 653 777	712 848 995	919 1078 1250	1443 1656 1885									
	射出容量 Injection capacity(PS)	g	14.5 18.2 22.7	23 35 45	41 53 22.7	62 89 122	103 141 184	158 207 262	252 320 395	494 597 711	651 776 910	840 986 1143	1320 1515 1724									
	射出壓力 Injection pressure	kg/cm ²	2598 2050 1663	2850 1910 1480	2910 2254 1565	3402 2362 1735	3101 2278 1744	2742 2100 1659	2630 2078 1683	2464 2036 1711	2409 2024 1725	2355 2006 1730	2278 1986 1744									
	射出速率 Injection rate	cm ³ /h	25.9 32.8 40.5	37 55 77	56.2 72.6 104.5	61 88 120	77 104 136	107 140 178	168 213 263	206 249 296	274 326 383	335 393 456	450 516 588									
	可塑化能力 Plasticizing capacity(PS)	kg/h	9 11 13	11.5 16 34	21 28 43	33 49 75	41 64 90	55 78 104	77 103 135	116 140 183	146 190 233	176 215 260	244 289 339									
	螺桿轉速 Screw rotation speed	rpm	10~280	10~285	10~325	10~325	10~300	10~255	10~253	10~218	10~227	10~209	10~196									
電熱容量 Heating capacity	kW	2.4	2.9	3.7	5	7.1	7.9	10.5	15.8	18.8	22.9	27										
鎖模系統 CLAMPING UNIT	鎖模力 Clamping force	ton	10	20	50	90	120	150	200	250	300	430	550									
	最小模厚 Minimum mold height	mm	120	150	150	150	180	200	220	220	260	280	350									
	開模行程 Opening stroke	mm	250	280	300	350	460	580	700	780	850	950	1050									
	最大開距 Maximum daylight	mm	370	430	450	500	640	780	920	1000	1110	1230	1400									
	柱間距 Distance between tie bars(HxV)	mm	250x250	280x280	320x320	360x360	410x410	460x460	520x520	560x560	650x650	750x750	850x850									
	模版尺寸 Platen size(HxV)	mm	325X325	380x380	455x455	530x530	590x590	690x690	770x770	840x840	970x970	1090x1090	1240x1240									
	頂針行程 Ejector stroke	mm	60	80	100	100	120	150	180	200	180	200	200									
頂出力 Ejector force	ton	2.2	2.2	3.4	3.4	4.9	4.9	5.8	7.7	7.7	12.5	12.5										
其他 OTHERS	電動馬達 Electric power	hp(kW)	7.5(5.6)	10(7.5)	15(11.2)	20(15)	25(18.7)	30(22.4)	40(30)	50(37.5)	60(45)	75(56.2)	100(75)									
	系統壓力 System pressure	kg/cm ²	140	140	175	175	175	175	175	175	175	175	175									
	油箱容量 Oil tank capacity	l	100	140	210	275	375	460	550	740	920	1150	1140									
	機械尺寸 Machine dimensions(LxWxH)	m	2.0x0.62x1.35	2.8x0.65x1.5	3.2x0.95x1.53	3.7x1.05x1.73	4.5x1.2x1.9	4.9x1.3x2.01	5.23x1.34x2.08	6.2x1.44x2.24	6.15x1.55x2.38	6.85x1.7x2.52	7.55x1.85x2.8									
	機械重量 Machine weight	ton	1.0	2.0	3.0	4.0	5.0	7.0	8.5	11	13.3	17.5	23.7									

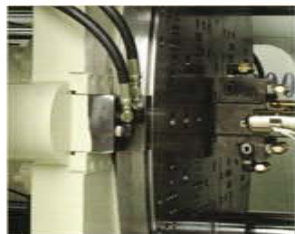
為配合設計之改進與更新，以上規格如有更改，恕不另行通知。
Due to continuous development of our products, specifications are subject to change without prior notice.

本公司亦接受特殊規格之訂製，歡迎垂詢。
Machine can be custom made upon request. Please call for further details.

CSM/DCM Series

多色/多料臥式系列

'Multi-colour' or 'Multi-component' Horizontal Series



高精密度的轉盤結構
High accuracy rotary index table



ACC高速射出儲能裝置及全閉環油電迴路
Accumulator for high speed injection, and injection closed-loop system



CSM-200T-3C



DCM-200T



精密電控系統
Advanced control system



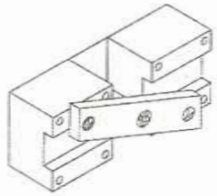
優良之塑化單元
Outstanding plasticizing unit



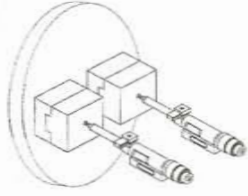
CSM-200T

雙/三色(料)機的射座配置模式 Injection Unit Configuration for 2/3-color (component) machines

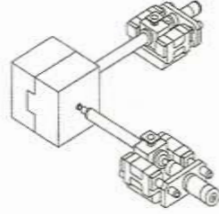
雙色 2-color



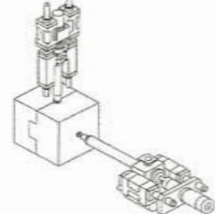
雙射座平行+橫仁旋轉技術
Two parallel injection units
Over-molding with rotating
mold technique



雙射座平行+旋轉技術
Two parallel injection units
Over-molding with rotary table
technique

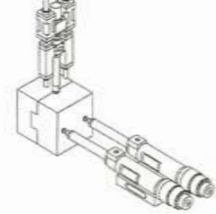
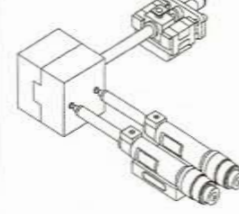
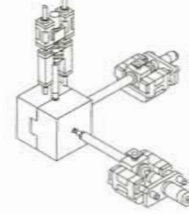


雙射座水平垂直
Two injection units in
horizontal / L-position



雙射座垂直
Two injection units in
horizontal / vertical position

三色 3-color



規格 Specifications

射出裝置選項 INJECTION UNIT OPTION		單位 UNIT	A			B			C			D			E			F			G			H			
射座裝置 INJECTION UNIT	螺桿直徑 Screw diameter	mm	ø18	ø22	ø25	ø22	ø25	ø30	ø25	ø30	ø35	ø30	ø35	ø40	ø35	ø40	ø45	ø40	ø45	ø50	ø45	ø50	ø55	ø50	ø55	ø60	
	理論射出容量 Theoretical injection volume	cm ³	25	38	49	45	58	84	68	98	134	113	154	201	173	226	286	276	350	432	350	432	522	471	570	678	
	射出容量 Injection capacity(PS)	g	23	35	45	41	52	76	62	89	122	103	140	183	157	205	260	262	332	410	332	410	496	447	541	644	
	射出壓力 Injection pressure	kg/cm ²	3038	2033	1575	2612	2033	1404	2800	1944	1428	2800	2057	1574	2603	1993	1574	2460	1944	1575	2497	2023	1672	2527	2088	1754	
	射出速率 Injection rate	cm ³ /s	36	54	70	42	55	79	56	81	110	78	106	138	98	128	162	128	162	200	182	226	273	203	246	292	
	可塑化能力 Plasticizing capacity(PS)	kg/h	14	23	32	15	21	33	23	35	54	32	49	69	43	60	83	50	69	92	75	100	128	90	115	144	
	螺桿轉速 Screw rotation speed	rpm		10-375			10-253			10-270			10-249			10-218			10-180			10-195			10-176		
	電熱容量 Heating capacity	KW		3			3.5			5.1			6.9			7.5			8.1			11			13		
	需求壓力 Required driving power	hp (kW)		10(7.5)			10(7.5)			15(11.2)			20(15)			25(18.7)			30(22.5)			40(30)			50(37.5)		

型號 MODEL	單位 UNIT	CSM-125T		CSM-150T		CSM-200T		CSM-250T		CSM-300T		CSM-430T		CSM-550T	
		射出裝置選項 INJECTION UNIT OPTION		序號 SERIES NO.		序號 SERIES NO.		序號 SERIES NO.		序號 SERIES NO.		序號 SERIES NO.		序號 SERIES NO.	
		I	II	I	II	I	II	I	II	I	II	I	II	I	II
夾模裝置 CLAMPING UNIT	鎖模力 Clamping force	120		150		200		250		300		430		550	
	最小模厚 Minimum mold height	180		200		220		220		260		280		350	
	開模行程 Opening stroke	460		580		700		780		850		950		1050	
	最大開距 Maximum daylight	640		780		920		1000		1110		1230		1400	
	柱內間距 Distance between tie bars(HxV)	410x410		460x460		520x520		560x560		650x650		750x750		850x850	
	模架尺寸 Platen size(HxV)	590x590		690x690		770x770		840x840		970x970		1090x1090		1240x1240	
	轉盤直徑 Rotary table diameter	ø530		ø610		ø700		ø740		ø880		ø1020		ø1120	
	成品頂出距離 Ejector stroke	120		150		150		180		180		200		200	
	頂出力 Ejector force	4.9		4.9		5.8		7.7		7.7		12.5		12.5	
	射機 OTDRS	電動馬達 Electric power	25(18.7)		30(22.5)		40(30)		50(37.5)		60(45)		80(60)		100(75)
油箱容量 Oil tank capacity		290		400		540		640		820		930		1140	
機械尺寸 Machine dimensions(LxWxH)		4.4x1.2x1.9		5.0x1.3x2.1		5.5x1.4x2.1		5.8x1.4x2.3		6.3x1.6x2.4		7.1x1.7x2.6		7.8x1.9x2.8	
機械重量 Machine weight		5.7		7.8		10.5		12.2		14.5		18.8		25	

為配合設計之改進與更新，以上規格如有更改，恕不另行通知。
Due to continuous development of our products, specifications are subject to change without prior notice.

本公司亦接受特殊規格之訂製，歡迎垂詢。
Machine can be custom made upon request. Please call for further details.

多色/多料直立式系列 'Multi-colour' or 'Multi-component' Vertical Series



VH-4R-20000T-2C



V4H-SD-2C



V4-4RU-3C



V4-3R-2C

規格 Specifications

射出裝置選項 INJECTION UNIT OPTION		單位 UNIT	A		B			C			D			E			F			G			H		
射出裝置 INJECTION UNIT	螺桿直徑 Screw diameter	mm	ø 20	ø 22	ø 22	ø 25	ø 28	ø 25	ø 28	ø 32	ø 32	ø 36	ø 40	ø 36	ø 40	ø 45	ø 45	ø 50	ø 55	ø 50	ø 55	ø 60	ø 55	ø 60	ø 65
	理論射出容量 Theoretical injection volume	cm ³	31	38	46	59	74	69	86	113	113	143	176	163	201	254	318	393	475	432	523	622	594	707	830
	射出容量 Injection capacity (PS)	g	30	36	43	55	69	65	81	106	106	134	165	153	189	239	299	369	447	406	491	585	558	664	780
	射出壓力 Injection pressure	kg/cm ²	2013	1663	2531	1960	1563	2330	1857	1422	2331	1842	1492	1993	1614	1276	1825	1478	1222	1803	1490	1252	1928	1620	1380
	射出速率 Injection rate	cm ³ /s	32	39	36	47	58	49	62	81	71	90	111	107	132	167	144	178	215	180	218	259	222	264	310
	可塑化能力 Plasticizing capacity (PS)	kg/h	7	9	11	15	20	15	21	29	44	58	73	66	84	101	106	133	155	116	135	161	143	171	201
	螺桿轉速 Screw rotation speed	rpm	164		186			187			269			289			268			220			220		
	電熱容量 Heating capacity	kW	2.7		3.3			3.9			5.3			6.5			8.3			8.3			9.3		

型號 MODEL		單位 UNIT	V4-R-80T-2C		V4-R-120T-2C		V4-R-170T-2C		V4-R-200T-2C		V4-R-240T-2C		V4-R-320T-2C		V4-R-500T-2C		V4-R-700T-2C	
射出裝置選項 INJECTION UNIT OPTION		序號 SERIES NO.	I, II		I, II		I, II		I, II		I, II		I, II		I, II		I, II	
			A,B	A,B	A,B,C	A,B,C	B,C,D	B,C,D	B,C,D,E	B,C,D,E	C,D,E,F	C,D,E,F	D,E,F,G	D,E,F,G	E,F,G,H	E,F,G,H	F,G,H	F,G,H
壓模裝置 CLAMPING UNIT	鎖模力 Clamping force	ton	80(40X2)		120(60X2)		170(85X2)		200(100X2)		240(120X2)		320(160X2)		500(250X2)		700(350X2)	
	最小模厚 Minimum mold height	mm	250-330		250-330		260-360		280-380		300-400		350-450		350-500		350-500	
	開模行程 Opening stroke	mm	250		280		350		350		400		400		500		500	
	最大開距 Maximum daylight	mm	500-580		530-610		610-710		630-730		700-800		750-850		850-1000		850-1000	
	成品頂出距離 Ejector stroke	mm	100		100		130		130		150		150		200		200	
	頂出力 Ejector force	ton	2.7		2.7		5.4		5.4		5.4		5.4		6.2		7.0	
	轉盤直徑 Rotary table diameter	mm	ø 880		ø 1000		ø 1200		ø 1200		ø 1350		ø 1500		ø 1800		ø 2000	
	冷卻水容量 Cooling water capacity	l/h	3100		3600		6000		6800		8400		10000		14400		13000	
其他 OTHERS	電動馬達 Electric power	hp(kW)	20/14.9		25/18.7		40/29.8		50/37.3		60/44.8		70/52.2		100/74.6		100/74.6	
	油箱容量 Oil tank capacity	l	310		360		680		680		880		1400		2200		2300	
	機械尺寸 Machine dimensions(LxWxH)	m	2.25x1.85x3.4		2.3x2.15x3.45		2.7x2.3x4.1		2.7x2.3x4.1		3.35x2.55x5.05		3.35x2.7x5.35		4.4x3.05x6.0		4.5x3.3x6.1	
	機械重量 Machine weight	ton	4.6		8		12.2		12.5		14.5		21		29		40	

為配合設計之改進及更新，以上規格如有更改，恕不另行通知。

Due to continuous development of our products, specifications are subject to change without prior notice.

本公司亦接受特殊規格之訂製，歡迎垂詢。

Machine can be custom made upon request. Please call for further details.

熱固性成型機

Thermoset Injection Molding Machines

1. 獨特料管低溫控制。
2. 完全符合材料及生產特性。
3. 兼有立式、臥式成型機，符合生產實用性。
4. 適用於橡膠、BMC、電木、DAP、環氧樹脂、尿素等。

1. Special barrel with excellent low temperature control.
2. Optimum design to meet material requirements.
3. Vertical and horizontal design for different applications.
4. Suitable for LSR, BMC, Phenolic, DAP, Rubber, Epoxy, tec



VH-2M-80T-BMC



BMC進料
BMC Material Loading



液壓式BMC擠壓進料裝置
BMC Material Loading Unit



VH-S-2M-110T-BMC

LSR Series

液態矽膠系列

Liquid Silicone Rubber Injection Series

液態矽橡膠

深具市場潛力與開發性的原材料

與MOMENTIVE (GE東芝)有機硅的長期配合中，百塑累積了各項LSR事業之完備方案：衛浴用品、醫護用具、嬰兒用品、體育產品、廚房配件、按鍵及密封件等。

您將體驗到低廢耗、高品質、高效益的快捷矽膠製品生產流程（包括原料整合及模具之開發）。

Liquid Silicone Rubber

A reliable material with a huge market potential and possibility for innovation

By working together with our partner, MOMENTIVE (GE Toshiba) Silicones for many years, Multiplas is well prepared to provide our customers with fully integrated LSR injection molding solutions for applications * Bathroom Products, Medical Devices, Baby Products, Sport Products, Kitchenware, Keypads and Seals . . .

Come and experience the low waste, high quality and high efficiency LSR production process with us. See how Multiplas assists you in implementing your ideas, from picking the right materials to mold design and making.



V4-SD-LSR



SM-50T-LSR

直立式 V-LSR Series

規格 Specifications

射出裝置選項 INJECTION UNIT OPTION		單位 UNIT	A	B	C	D	E	F	G	H	
射出裝置 INJECTION UNIT	螺桿直徑 Screw diameter	mm	Ø20 Ø25	Ø25 Ø30	Ø30 Ø35	Ø35 Ø40	Ø40 Ø45	Ø45 Ø50	Ø55 Ø60	Ø60 Ø70	
	理論射出容量 Theoretical injection volume	cm ³	31 48	64 96	98 134	144 188	200 254	286 353	475 565	622 846	
	射出重量 Injection capacity(LSR)	g	33 52	69 105	105 143	155 203	217 274	308 381	513 610	671 914	
	射出壓力 Injection pressure	kg/cm ²	1715 1097	1618 1123	1555 1142	1382 1058	1367 1080	1354 1097	1336 1123	1554 1142	
	射出速率 Injection rate	cm ³ /s	32 50	47 68	89 122	131 171	163 207	193 239	314 373	303 412	
	螺桿轉速 Screw rotation speed	rpm	10 - 240	10 - 220	10 - 200	10 - 200	10 - 200	10 - 200	10 - 200	10 - 200	10 - 200
	模具有熱容量 Mold heating capacity	kW	2.5 x 3	3 x 3	4 x 3	5 x 3	8 x 3	10 x 3	12 x 3	15 x 3	
需求馬力 Required driving power	hp (kW)	7.5 (5.6)	10 (7.5)	15 (11.2)	20 (15)	25 (18.7)	30 (22.5)	40 (30)	50 (37.5)		

型號 MODEL	單位 UNIT	V2-15T-LSR	V4-35T-LSR	V4-55T-LSR	V4-85T-LSR	V4-120T-LSR	V4-160T-LSR	V4-200T-LSR	V4-250T-LSR
射出裝置選項 INJECTION UNIT OPTION	序號 SERIES NO.	A	A, B	A, B, C	B, C, D	B, C, D, E	C, D, E, F	D, E, F, G	E, F, G, H
鎖模裝置 CLAMPING UNIT	鎖模力 Clamping force	ton	15	35	55	85	120	160	250
	最小模厚 Minimum mold height	mm	80 - 160	150 - 550	180 - 280	200 - 300	200 - 300	250 - 350	300 - 400
	開模行程 Opening stroke	mm	220	200	200	250	250	300	350
	最大開距 Maximum daylight	mm	260 - 360	350 - 450	380 - 480	450 - 550	450 - 550	550 - 650	650 - 750
	頂針行程 Ejector stroke	mm	50	60	70	80	80	100	120
	頂出力 Ejector force	ton	1.6	2.0	2.2	3.0	3.0	4.5	5.0

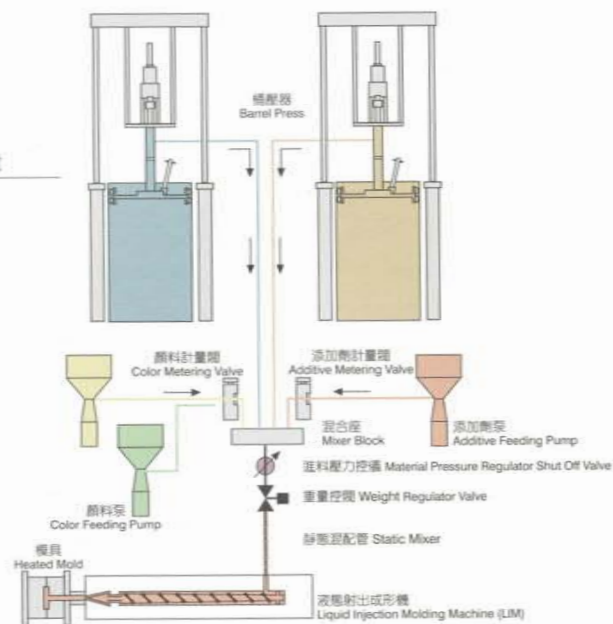
臥式 SM-LSR Series

規格 Specifications

型號 MODEL		單位 UNIT	SM-50T-LSR
射出裝置 INJECTION UNIT	螺桿直徑 Screw diameter	mm	Ø30
	理論射出容量 Theoretical injection volume	cm ³	84
	射出重量 Injection capacity(LSR)	g	76
	射出壓力 Injection pressure	kg/cm ²	1701
	射出速率 Injection rate	cm ³ /s	82.7
	模具有熱容量 Mold heating capacity	kW	4 x 3
	螺桿轉速 Screw rotation speed	rpm	10 - 265
鎖模裝置 CLAMPING UNIT	鎖模力 Clamping force	ton	50
	最小模厚 Minimum mold height	mm	280
	開模行程 Opening stroke	mm	350
	最大開距 Maximum daylight	mm	630
	柱內開距 Distance between tie bars(HxV)	mm	320 x 320
	模板尺寸 Platen size(HxV)	mm	455 x 455
頂針行程 Ejector stroke	mm	100	
頂出力 Ejector force	ton	3.4	

為配合設計之改進及更新，以上規格如有更改，恕不另行通知。
Due to continuous development of our products, specifications are subject to change without prior notice.
本公司亦接受特殊規格之訂製，歡迎垂詢。
Machine can be custom made upon request. Please call for further details.

計量混配系統配置 System Scheme of an LIM Metering Unit



客戶的需求 + 我們的設計 = 生產自動化
 Molding Requirements + Multiplas Design = Auto Molding System



V3-2R-85T-APC
 Auto Insert-Takeout IMM
 全自動嵌入-取出射出機



V3-2R-55T-APC
 Auto Insert-Takeout IMM
 全自動嵌入-取出射出機



V3-4R-85T-APC
 Auto Insert-Takeout IMM
 全自動嵌入-取出射出機



V3-2R-85T-APC
 Auto Insert-Takeout IMM
 全自動嵌入-取出射出機



V3-3R-55T-APC
 Auto Insert-Takeout IMM
 全自動嵌入-取出射出機



V3-2R-55T-APC
 Auto Insert-Takeout IMM
 全自動嵌入-取出射出機



VH-S-160T-APC
 Full Auto Golf Ball IMM
 全自動高爾夫球射出機



V4-S-55T-APC
 Auto Insert-Takeout IMM
 全自動嵌入-取出射出機



V4-55T-APC
 Lead Frame Continue IMM
 連續料帶端子射出機



V4-S-200T-2C-APC
 Full Auto Vertical 2-color IMM
 全自動雙色射出



V4-S-250T-2C-APC
 Full Auto Vertical 2-color IMM
 全自動雙色射出



V4-S-160T-2C-APC
 Full Auto Vertical 2-color IMM
 全自動雙色射出

我們能完全滿足客戶特殊生產的需求 We Can Meet Special Production Requirements



V3U-R-150T
Vertical Rotary IMM
立式轉盤射出機



V4-30P
Transfer Machine
轉移成形機



V2C-55T
Vertical Rubber IMM
立式橡膠射出機



TG-10T
Transfer Machine
單材專用轉移成形機



NVC-15T
Hot Stamping Machine
熱壓成形機



VD
Mold Vacuum Device
模內真空裝置



OM-20T-CQ
Clean Room IMM
無塵室用射出機



VT-35T
Table Top Vertical IMM
桌上型立式射出機



CV-20T
Bottom Up Top Down
Vertical IMM
上下同步合模立式射出機



V4-SD-55HC
High Speed Vertical IMM
高速立式射出機



HV-10T
L Type IMM
L型射出機



V4-85T-2C
Vertical 2-Color IMM
立式雙色射出機



SMH-100T(1500mm/s)
High Speed High Pressure IMM
高壓高速射出機

服務項目 List of Services

直立式射出成型機	Vertical IMM	微量迷你型射出機(0.5~5c.c)	Mini IMM(0.5~5c.c)
臥式精密射出機	Horizontal precision IMM	拉(捲)帶式連續射出成型自動化系統	Fully Auto Lead Frame IMM System
雙(三)色、雙(三)料射出機	2/3 color IMM	高爾夫球成型製造設備	Fully Auto Golf Ball IMM System
(臥式&立式、轉盤&轉芯)	(Horizontal & Vertical、Rotary Table & Rotary Core)	整列嵌入、成型、取出全自動化系統	Fully Auto Insert Moulding System
塑膠磁鐵(PM)射出成型機	Plastic Magnet (PM) IMM	高速高壓射出	High Speed High Pressure Injection
MIM金屬射出、CIM陶瓷射出	MIM、CIM	模具用透氣金屬材料	Breathing Metal for Moulds
LIM液態射出系統(LSR,EPOXY)	LIM(LSR、EPOXY)	射出成型整廠規劃及技術指導	Total Solution for Injection molding
熱固性射出機(電木、BML、橡膠,EPOXY)	BMC、EPOXY、Bakelite、Rubber IMM	模具設計	Tooling design
IMD(IMR/IML/IMF)模內裝飾射出系統	IMD(IMR/IML/IMF)	模內抽真空設備	Mold Vacuum

Perfect Solutions for Technical Moulding

MULTIPLAS®

特殊注塑成型的完美對策

百塑企業股份有限公司
MULTIPLAS ENGINERY CO., LTD.

總部與台灣工廠 HEADQUARTERS & FACTORY:

65, TECHNOLOGY 7TH ROAD, HWA-YA TECHNOLOGY PARK,
GUEISHAN, TAOYUAN, TAIWAN.

桃園市龜山區華亞科技園區科技七路65號

TEL: 886-3-318-0090 ~ 0100

FAX: 886-3-397-5498 · 886-3-318-0979

桃園市中壢區龍昌路32號

TEL: 886-3-436-8055 TEL: 886-3-436-8056

E-mail: multiplas@multiplas.com.tw

中國工廠與營業服務 CHINA OPERATIONS:

昆山百塑精密機械有限公司
MULTIPLAS ENGINERY (KUNSHAN) CO., LTD.

江蘇省昆山市花橋鎮蓬青路566號

TEL: 86-512-5769-9188 #578

86-512-5760-6068

FAX: 86-512-5771-9318

E-mail: sales@multipals.com.cn

昆山百塑精密機械(東莞分公司)
SOUTH CHINA BRANCH

廣東省東莞市長安鎮振安中路266號

TEL: 86-138-2691-7820

86-769-8549-2510

FAX: 86-769-8549-2530

E-mail: dg_sa01@multipals.com.cn